



**Zimmer®
Trabecular Metal™
Monoblock Tibial
Components**



Setting a New Gold Standard in Cementless TKA

The Best Thing Next to Bone™

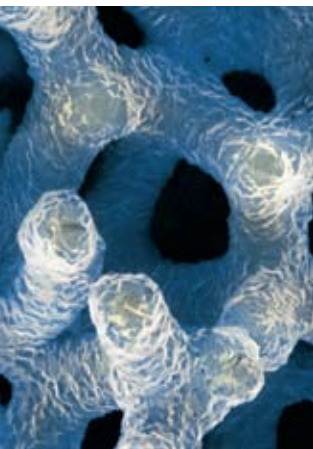


Trabecular Metal™

material resembles trabecular bone in its cellular structure and weight-bearing characteristics. By approximating the mechanical and physical properties of bone, *Trabecular Metal* material enables rapid and extensive bone infiltration.^{1,2}

Clinical experience in thousands of cases has proven the versatility of *Trabecular Metal* Technology in diverse orthopaedic applications.

75-80% Porosity • High Friction & Stability • Bone Matched Elasticity



Fully interconnected pores and high porosity allow approximately two to three times greater bone ingrowth than with conventional coatings and double the interface shear strength.^{1,2}

Trabecular Metal material produces more friction than sintered coatings on cancellous bone, which increases initial implant stability.^{8,9}

Trabecular Metal material is the only metal used in orthopaedics with elasticity similar to bone. The material's high strength-to-weight ratio and low modulus of elasticity provides more normal physiologic loading and helps minimize stress shielding.^{1,2,5,6}



Compatible with CR-Flex and LPS-Flex.

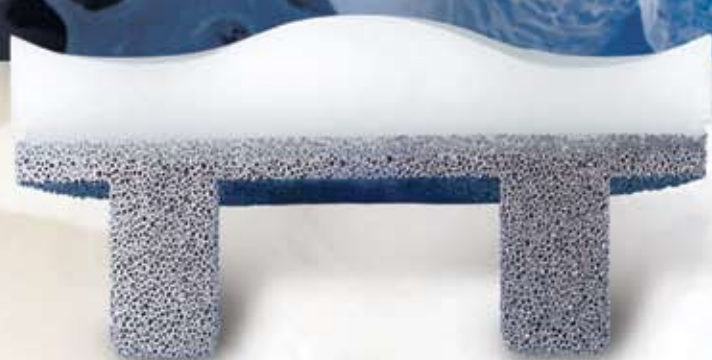
Trabecular Metal Monoblock Tibial Components combine the benefits of *Trabecular Metal* material with the geometries of the *NexGen*® Complete Knee Solution Cruciate Retaining (CR/CR-Flex) and *NexGen Legacy*® Knee Posterior Stabilized (LPS/LPS-Flex) Tibial Articular Surfaces.

NexGen Legacy
Posterior Stabilized
(LPS-Flex) Monoblock Tibia

NexGen Cruciate
Retaining (CR-Flex)
Monoblock Tibia



Trabecular Metal MONOBLOCK Components



Secure Polyethylene/ Trabecular Metal Interface

Direct compression molding of polyethylene into *Trabecular Metal* material eliminates the potential for backside wear.⁴

Designed To Optimize Load Transfer

Trabecular Metal material combines high compressive strength with low stiffness, which reduces the potential for stress shielding and lift-off.^{3,6}

Initial Stability – Press-fit Pegs Engage Bone

Holes are drilled into the bone, into which the hex-shape pegs are interference fit for secure fixation. The *Trabecular Metal* pegs are positioned within the strongest available bone, in line with condylar loading.³



Trabecular Metal Monoblock Tibial Ordering Information

LPS Monoblock Implants

Prod. No.	Description
00-5886-004-01	Trabecular Metal Monoblock LPS Implant Set (Includes 1 each of the items listed below)
00-5886-053-10	Trabecular Metal Monoblock LPS Tibia, Yellow, Size 3 C/D, 10mm
00-5886-053-12	Trabecular Metal Monoblock LPS Tibia, Yellow, Size 3 C/D, 12mm
00-5886-053-14	Trabecular Metal Monoblock LPS Tibia, Yellow, Size 3 C/D, 14mm
00-5886-053-17	Trabecular Metal Monoblock LPS Tibia, Yellow, Size 3 C/D, 17mm
00-5886-054-10	Trabecular Metal Monoblock LPS Tibia, Yellow, Size 4 C/D, 10mm
00-5886-054-12	Trabecular Metal Monoblock LPS Tibia, Yellow, Size 4 C/D, 12mm
00-5886-054-14	Trabecular Metal Monoblock LPS Tibia, Yellow, Size 4 C/D, 14mm
00-5886-054-17	Trabecular Metal Monoblock LPS Tibia, Yellow, Size 4 C/D, 17mm
00-5886-075-10	Trabecular Metal Monoblock LPS Tibia, Str Green, Size 5 C/D, 10mm
00-5886-075-12	Trabecular Metal Monoblock LPS Tibia, Str Green, Size 5 C/D, 12mm
00-5886-075-14	Trabecular Metal Monoblock LPS Tibia, Str Green, Size 5 C/D, 14mm
00-5886-075-17	Trabecular Metal Monoblock LPS Tibia, Str Green, Size 5 C/D, 17mm
00-5886-076-10	Trabecular Metal Monoblock LPS Tibia, Str Green, Size 6 C/D, 10mm
00-5886-076-12	Trabecular Metal Monoblock LPS Tibia, Str Green, Size 6 C/D, 12mm
00-5886-076-14	Trabecular Metal Monoblock LPS Tibia, Str Green, Size 6 C/D, 14mm
00-5886-076-17	Trabecular Metal Monoblock LPS Tibia, Str Green, Size 6 C/D, 17mm
00-5886-063-10	Trabecular Metal Monoblock LPS Tibia, Str Yellow, Size 3 E/F, 10mm
00-5886-063-12	Trabecular Metal Monoblock LPS Tibia, Str Yellow, Size 3 E/F, 12mm
00-5886-063-14	Trabecular Metal Monoblock LPS Tibia, Str Yellow, Size 3 E/F, 14mm
00-5886-063-17	Trabecular Metal Monoblock LPS Tibia, Str Yellow, Size 3 E/F, 17mm
00-5886-064-10	Trabecular Metal Monoblock LPS Tibia, Str Yellow, Size 4 E/F, 10mm
00-5886-064-12	Trabecular Metal Monoblock LPS Tibia, Str Yellow, Size 4 E/F, 12mm
00-5886-064-14	Trabecular Metal Monoblock LPS Tibia, Str Yellow, Size 4 E/F, 14mm
00-5886-064-17	Trabecular Metal Monoblock LPS Tibia, Str Yellow, Size 4 E/F, 17mm
00-5886-055-10	Trabecular Metal Monoblock LPS Tibia, Green, Size 5 E/F, 10mm
00-5886-055-12	Trabecular Metal Monoblock LPS Tibia, Green, Size 5 E/F, 12mm
00-5886-055-14	Trabecular Metal Monoblock LPS Tibia, Green, Size 5 E/F, 14mm
00-5886-055-17	Trabecular Metal Monoblock LPS Tibia, Green, Size 5 E/F, 17mm
00-5886-056-10	Trabecular Metal Monoblock LPS Tibia, Green, Size 6 E/F, 10mm
00-5886-056-12	Trabecular Metal Monoblock LPS Tibia, Green, Size 6 E/F, 12mm
00-5886-056-14	Trabecular Metal Monoblock LPS Tibia, Green, Size 6 E/F, 14mm
00-5886-056-17	Trabecular Metal Monoblock LPS Tibia, Green, Size 6 E/F, 17mm
00-5886-067-10	Trabecular Metal Monoblock LPS Tibia, Str Blue, Size 7 E/F, 10mm
00-5886-067-12	Trabecular Metal Monoblock LPS Tibia, Str Blue, Size 7 E/F, 12mm

Prod. No.	Description
00-5886-067-14	Trabecular Metal Monoblock LPS Tibia, Str Blue, Size 7 E/F, 14mm
00-5886-067-17	Trabecular Metal Monoblock LPS Tibia, Str Blue, Size 7 E/F, 17mm
00-5886-068-10	Trabecular Metal Monoblock LPS Tibia, Str Blue, Size 8 E/F, 10mm
00-5886-068-12	Trabecular Metal Monoblock LPS Tibia, Str Blue, Size 8 E/F, 12mm
00-5886-068-14	Trabecular Metal Monoblock LPS Tibia, Str Blue, Size 8 E/F, 14mm
00-5886-068-17	Trabecular Metal Monoblock LPS Tibia, Str Blue, Size 8 E/F, 17mm
00-5886-065-10	Trabecular Metal Monoblock LPS Tibia, Str Green, Size 5 G/H, 10mm
00-5886-065-12	Trabecular Metal Monoblock LPS Tibia, Str Green, Size 5 G/H, 12mm
00-5886-065-14	Trabecular Metal Monoblock LPS Tibia, Str Green, Size 5 G/H, 14mm
00-5886-065-17	Trabecular Metal Monoblock LPS Tibia, Str Green, Size 5 G/H, 17mm
00-5886-066-10	Trabecular Metal Monoblock LPS Tibia, Str Green, Size 6 G/H, 10mm
00-5886-066-12	Trabecular Metal Monoblock LPS Tibia, Str Green, Size 6 G/H, 12mm
00-5886-066-14	Trabecular Metal Monoblock LPS Tibia, Str Green, Size 6 G/H, 14mm
00-5886-066-17	Trabecular Metal Monoblock LPS Tibia, Str Green, Size 6 G/H, 17mm
00-5886-057-10	Trabecular Metal Monoblock LPS Tibia, Blue, Size 7 G/H, 10mm
00-5886-057-12	Trabecular Metal Monoblock LPS Tibia, Blue, Size 7 G/H, 12mm
00-5886-057-14	Trabecular Metal Monoblock LPS Tibia, Blue, Size 7 G/H, 14mm
00-5886-057-17	Trabecular Metal Monoblock LPS Tibia, Blue, Size 7 G/H, 17mm
00-5886-058-10	Trabecular Metal Monoblock LPS Tibia, Blue, Size 8 G/H, 10mm
00-5886-058-12	Trabecular Metal Monoblock LPS Tibia, Blue, Size 8 G/H, 12mm
00-5886-058-14	Trabecular Metal Monoblock LPS Tibia, Blue, Size 8 G/H, 14mm
00-5886-058-17	Trabecular Metal Monoblock LPS Tibia, Blue, Size 8 G/H, 17mm



CR Monoblock Implants

Prod. No.	Description
00-5886-004-00	Trabecular Metal Monoblock CR Implant Set (Includes 1 each of the items listed below)
00-5886-043-10	Trabecular Metal Monoblock CR Tibia, Yellow, Size 3 C-H, 12mm
00-5886-043-12	Trabecular Metal Monoblock CR Tibia, Yellow, Size 3 C-H, 12mm
00-5886-043-14	Trabecular Metal Monoblock CR Tibia, Yellow, Size 3 C-H, 14mm
00-5886-043-17	Trabecular Metal Monoblock CR Tibia, Yellow, Size 3 C-H, 17mm
00-5886-044-10	Trabecular Metal Monoblock CR Tibia, Yellow, Size 4 C-H, 10mm
00-5886-044-12	Trabecular Metal Monoblock CR Tibia, Yellow, Size 4 C-H, 12mm
00-5886-044-14	Trabecular Metal Monoblock CR Tibia, Yellow, Size 4 C-H, 14mm
00-5886-044-17	Trabecular Metal Monoblock CR Tibia, Yellow, Size 4 C-H, 17mm
00-5886-045-10	Trabecular Metal Monoblock CR Tibia, Green, Size 5 C-H, 10mm
00-5886-045-12	Trabecular Metal Monoblock CR Tibia, Green, Size 5 C-H, 12mm
00-5886-045-14	Trabecular Metal Monoblock CR Tibia, Green, Size 5 C-H, 14mm
00-5886-045-17	Trabecular Metal Monoblock CR Tibia, Green, Size 5 C-H, 17mm
00-5886-046-10	Trabecular Metal Monoblock CR Tibia, Green, Size 6 C-H, 10mm
00-5886-046-12	Trabecular Metal Monoblock CR Tibia, Green, Size 6 C-H, 12mm
00-5886-046-14	Trabecular Metal Monoblock CR Tibia, Green, Size 6 C-H, 14mm
00-5886-046-17	Trabecular Metal Monoblock CR Tibia, Green, Size 6 C-H, 17mm
00-5886-047-10	Trabecular Metal Monoblock CR Tibia, Blue, Size 7 C-H, 10mm
00-5886-047-12	Trabecular Metal Monoblock CR Tibia, Blue, Size 7 C-H, 12mm
00-5886-047-14	Trabecular Metal Monoblock CR Tibia, Blue, Size 7 C-H, 14mm
00-5886-047-17	Trabecular Metal Monoblock CR Tibia, Blue, Size 7 C-H, 17mm
00-5886-048-10	Trabecular Metal Monoblock CR Tibia, Blue, Size 8 C-H, 10mm
00-5886-048-12	Trabecular Metal Monoblock CR Tibia, Blue, Size 8 C-H, 12mm
00-5886-048-14	Trabecular Metal Monoblock CR Tibia, Blue, Size 8 C-H, 14mm
00-5886-048-17	Trabecular Metal Monoblock CR Tibia, Blue, Size 8 C-H, 17mm

References

- JD Bobyn, SA Hacking, JJ Krygier, SP Chan, KK Toh, M Tanzer, "Characterization of a New Porous Tantalum Biomaterial for Reconstructive Surgery", 66th Annual AAOS, Anaheim, CA, Feb 4-8, 1999, Scientific Exhibit.
- JD Bobyn, GJ Stackpool, SS Hacking, M Tanzer, JJ Krygier, "Characteristics of Bone In-Growth and Interface Mechanics of a New Porous Tantalum Biomaterial", the Journal of Bone and Joint Surgery (British Version), Sep 1999, 81-B no. 5, pp 907-914."
- Florio, C.S., Poggie, R.A., Sidebotham, C., Lewallen, D.G., Hanssen, A., "Stability Characteristics of a Cementless Monoblock Porous Tantalum Tibial Implant without Ancillary Fixation", Presented at the 2004 Annual Meeting of the ORS, San Francisco, CA, March 7-10, 2004.
- RA Poggie, R Cohen, RG Averill, "Characterization of Porous Tantalum Metal, Direct Compression Molded UHMWPE Junction", 44th ORS, New Orleans, LA, March 16-19, 1998, pp 777.
- DR Pedersen, TD Brown, RA Poggie, "Finite Element Analysis of Peri-Acetabular Stress of Cemented, Metal-Backed, and Porous Tantalum-Backed Acetabular Components", The 45th Orthopaedic Research Society Meeting, Anaheim, CA, Feb 1-4, 1999.
- Rawlinson, JJ, Wright, TM, Bartel, DL, "Finite Element Analysis of a Porous Tantalum Monoblock Tibia Compared with a Metal-Backed Tibial Component", Presented at the 51st Annual ORS, Washington D.C., February, 2005.
- RA Poggie and JE Wood, "Preliminary Clinical and Radiographic Results of Porous Tantalum in Primary TKA", IMECHE's Knee Arthroplasty: Engineering Functionality, April 7-9, 2005 Royal College of Surgeons, London, UK conference proceedings, pp 57-60.
- Zhang Y, Ahn PB, Fitzpatrick DC, Heiner AD, Poggie RA, Brown, TD, "Interfacial frictional behavior: Cancellous bone, cortical bone, and a novel porous tantalum biomaterial", Journal of Musculoskeletal Research, 3(4): 245-251, 1999.
- A Shirazi-Adl, M Dammak, G Paiement, "Experimental determination of friction characteristics at the Trabecular bone/porous-coated metal interface in cementless implants", the J of Biomedical Research, Vol 27, 1993, pp167-175.

Contact your Zimmer representative or visit us at www.zimmer.com

